

Test Report

SL52035261176401TX

Date: July 13, 2020

Page 1 of 4

XIANTAO XINGRONG PROTECTIVE PRODUCTS CO., LTD.  
NO. 46 PENGCHANG AVENUE, PENGCHANG TOWN, XIANTAO CITY, HUBEI PROVINCE

The following sample(s) was/were submitted and identified on behalf of the client as:

Sample Description : (A) Disposable medical mask

SGS Internal Ref No. : SHHL2006523700MD

Style No. : 17.5cm X9.5cm

Sample Color : (A) Blue

Manufacturer : XIANTAO XINGRONG PROTECTIVE PRODUCTS CO., LTD.

Roll/ Lot No. : XR200612001

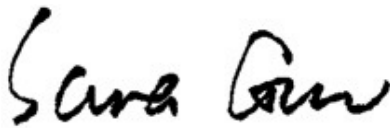
Test Performed : Selected test(s) as requested by applicant

Sample Receiving Date : Jun 22, 2020

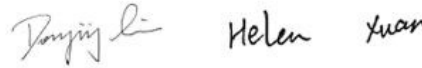
Testing Period : Jun 22, 2020 - Jul 13, 2020

Test Result(s) : Unless otherwise stated the results shown in this test report refer only to the sample(s) tested, for further details, please refer to the following page(s).

Signed for and on behalf of  
SGS-CSTC Standards Technical Services (Shanghai) Co., Ltd Testing Center



Sara Guo (Account Executive)



Dongjing Liu / Hailian Xuan (Authorized Signatory)



Unless otherwise agreed in writing, this document is issued by the Company subject to its General Conditions of Service printed overleaf, available on request or accessible at <http://www.sgs.com/en/Terms-and-Conditions.aspx> and, for electronic format documents, subject to Terms and Conditions for Electronic Documents at <http://www.sgs.com/en/Terms-and-Conditions/Terms-e-Documents.aspx>. Attention is drawn to the limitation of liability, indemnification and jurisdiction issues defined therein. Any holder of this document is advised that information contained hereon reflects the Company's findings at the time of its intervention only and within the limits of Client's instructions, if any. The Company's sole responsibility is to its Client and this document does not exonerate parties to a transaction from exercising all their rights and obligations under the transaction documents. This document cannot be reproduced except in full, without prior written approval of the Company. Any unauthorized alteration, forgery or falsification of the content or appearance of this document is unlawful and offenders may be prosecuted to the fullest extent of the law. Unless otherwise stated the results shown in this test report refer only to the sample(s) tested and such sample(s) are retained for 30 days only.

Attention: To check the authenticity of testing / inspection report & certificate, please contact us at telephone: (86-755) 8307 1443, or email: [CN.Doccheck@sgs.com](mailto:CN.Doccheck@sgs.com)

Test Result

**EN 14683:2019+AC:2019 Medical Face Masks-Requirements and Test Methods**

**Clause 5.2 Performance Requirement**

**Clause 5.2.2 Bacterial filtration efficiency (BFE)**

(EN 14683:2019+AC:2019 Annex B)

Sample: A

Conditioning Parameters : Minimum of 4 hours at 21±5°C and 85±5% R.H.  
 Dimensions of test specimen : ~177 mm x 153 mm  
 Test Area : ~60 cm<sup>2</sup>  
 Test Side : Inside  
 Flow Rate : 28.3 l/min  
 Positive Control Average : 2247 CFU  
 Negative Monitor Count : < 1 CFU

	1#	2#	3#	4#	5#
(BFE), %	99.9	99.9	99.9	99.9	99.9

Remark: Performance Requirement: Type I ≥ 95%, Type II ≥ 98%, Type IIR ≥ 98%

**Clause 5.2.3 Breathability**

(EN 14683 :2019+AC:2019 Annex C)

Sample: A

Test number and location : 5 random areas for each specimen (face mask)  
 Conditioning Parameters : Minimum of 4 hours at 21±5°C and 85±5% R.H.  
 Test Area : 4.9 cm<sup>2</sup>  
 Flow Rate : 8 l/min

	1#	2#	3#	4#	5#
Differential pressure ΔP (Pa/cm <sup>2</sup> )	39	38	37	38	38

Remark: Performance Requirement: Type I < 40 Pa/cm<sup>2</sup>, Type II < 40 Pa/cm<sup>2</sup>, Type IIR < 60 Pa/cm<sup>2</sup>



Unless otherwise agreed in writing, this document is issued by the Company subject to its General Conditions of Service printed overleaf, available on request or accessible at <http://www.sgs.com/en/Terms-and-Conditions.aspx> and, for electronic format documents, subject to Terms and Conditions for Electronic Documents at <http://www.sgs.com/en/Terms-and-Conditions/Terms-e-Documents.aspx>. Attention is drawn to the limitation of liability, indemnification and jurisdiction issues defined therein. Any holder of this document is advised that information contained hereon reflects the Company's findings at the time of its intervention only and within the limits of Client's instructions, if any. The Company's sole responsibility is to its Client and this document does not exonerate parties to a transaction from exercising all their rights and obligations under the transaction documents. This document cannot be reproduced except in full, without prior written approval of the Company. Any unauthorized alteration, forgery or falsification of the content or appearance of this document is unlawful and offenders may be prosecuted to the fullest extent of the law. Unless otherwise stated the results shown in this test report refer only to the sample(s) tested and such sample(s) are retained for 30 days only.

Attention: To check the authenticity of testing / inspection report & certificate, please contact us at telephone: (86-755) 8307 1443, or email: [CN.Doccheck@sgs.com](mailto:CN.Doccheck@sgs.com)  
 SGS-CSTC Standards Technical Services (Shanghai) Co., Ltd. 3<sup>rd</sup> Building, No.889, Yishan Road, Xuhui District Shanghai, China 200233 t (86-21) 61402666 f (86-21) 64958763 www.sgsgroup.com.cn  
 Testing Center: Technical Services (Shanghai) Co., Ltd. 中国·上海·徐汇区宜山路889号3号楼 邮编: 200233 t (86-21) 61402666 f (86-21) 64958763 e [sgs.china@sgs.com](mailto:sgs.china@sgs.com)

**Clause 5.2.4 Splash Resistance**

(ISO 22609 :2004, Pressure 16.0 kPa)

Penetration on inside surface							
1#	2#	3#	4#	5#	6#	7#	8#
Pass	Pass	Pass	Pass	Pass	Pass	Pass	Pass
9#	10#	11#	12#	13#	14#	15#	16#
Pass	Pass	Pass	Pass	Pass	Pass	Pass	Pass
17#	18#	19#	20#	21#	22#	23#	24#
Pass	Pass	Pass	Pass	Pass	Pass	Pass	Pass
25#	26#	27#	28#	29#	30#	31#	32#
Pass	Pass	Pass	Pass	Pass	Pass	Pass	Pass
Number of Pass:			32				
Overall result:			Acceptable				

Remark:

- 1) Performance Requirement Type I: N/A, Type II: N/A, Type IIR:  $\geq 16.0\text{kPa}$
- 2) Distance of the medical face mask target area surface to the tip of cannula is  $300\pm 10\text{mm}$ .
- 3) Condition and Test temperature  $(21\pm 5)^{\circ}\text{C}$ , relative humidity  $(85\pm 10)\%$
- 4) An acceptable quality limit of 4.0% is met for a single sampling plan when 29 or more of the 32 tested specimens show pass results

**Clause 5.2.5 Microbial Cleanliness**

(EN 14683:2019+AC:2019 Annex D and EN ISO 11737-1:2018)

Sample Number	Mask Weight(g)	Total Bioburden, (CFU/mask)	Total Bioburden, (CFU/g)
1#	2.86	18	6.29
2#	2.83	3	1.06
3#	2.77	15	5.42
4#	2.81	9	3.20
5#	2.80	12	4.29

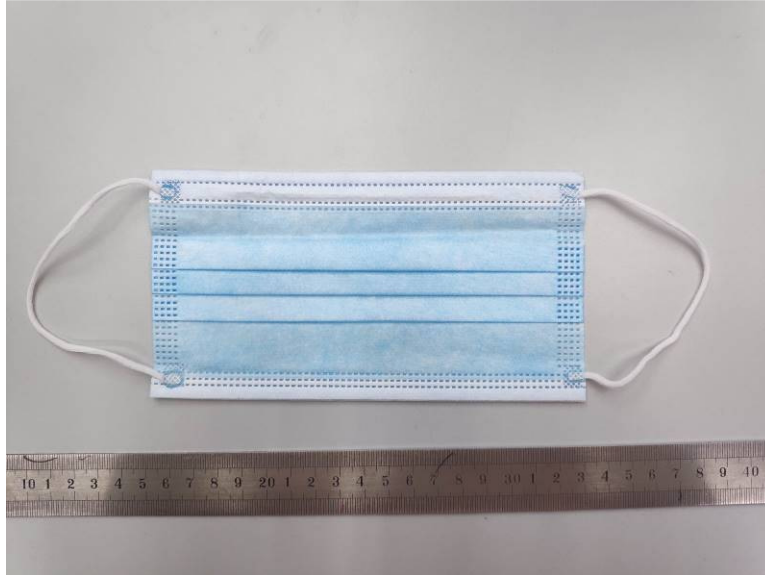
Remark: Performance Requirement: Type I  $\leq 30\text{ CFU/g}$ , Type II  $\leq 30\text{ CFU/g}$ , Type IIR  $\leq 30\text{ CFU/g}$



Unless otherwise agreed in writing, this document is issued by the Company subject to its General Conditions of Service printed overleaf, available on request or accessible at <http://www.sgs.com/en/Terms-and-Conditions.aspx> and, for electronic format documents, subject to Terms and Conditions for Electronic Documents at <http://www.sgs.com/en/Terms-and-Conditions/Terms-e-Documents.aspx>. Attention is drawn to the limitation of liability, indemnification and jurisdiction issues defined therein. Any holder of this document is advised that information contained hereon reflects the Company's findings at the time of its intervention only and within the limits of Client's instructions, if any. The Company's sole responsibility is to its Client and this document does not exonerate parties to a transaction from exercising all their rights and obligations under the transaction documents. This document cannot be reproduced except in full, without prior written approval of the Company. Any unauthorized alteration, forgery or falsification of the content or appearance of this document is unlawful and offenders may be prosecuted to the fullest extent of the law. Unless otherwise stated the results shown in this test report refer only to the sample(s) tested and such sample(s) are retained for 30 days only.  
Attention: To check the authenticity of testing /inspection report & certificate, please contact us at telephone: (86-755) 8307 1443, or email: [CN.Doccheck@sgs.com](mailto:CN.Doccheck@sgs.com)

SGS-CSTC Standards Technical Services (Shanghai) Co., Ltd. 3<sup>rd</sup> Building, No.889, Yishan Road, Xuhui District Shanghai, China 200233 t (86-21) 61402666 f (86-21) 64958763 www.sgs.com.cn  
Testing Center: Technical Services (Shanghai) Co., Ltd. 中国·上海·徐汇区宜山路889号3号楼 邮编: 200233 t (86-21) 61402666 f (86-21) 64958763 e [sgs.china@sgs.com](mailto:sgs.china@sgs.com)

### Sample Photo



The statement of conformity in this test report is only based on measured values by the laboratory and does not take their uncertainties into consideration.

\*\*\*End of Report\*\*\*



Unless otherwise agreed in writing, this document is issued by the Company subject to its General Conditions of Service printed overleaf, available on request or accessible at <http://www.sgs.com/en/Terms-and-Conditions.aspx> and, for electronic format documents, subject to Terms and Conditions for Electronic Documents at <http://www.sgs.com/en/Terms-and-Conditions/Terms-e-Documents.aspx>. Attention is drawn to the limitation of liability, indemnification and jurisdiction issues defined therein. Any holder of this document is advised that information contained hereon reflects the Company's findings at the time of its intervention only and within the limits of Client's instructions, if any. The Company's sole responsibility is to its Client and this document does not exonerate parties to a transaction from exercising all their rights and obligations under the transaction documents. This document cannot be reproduced except in full, without prior written approval of the Company. Any unauthorized alteration, forgery or falsification of the content or appearance of this document is unlawful and offenders may be prosecuted to the fullest extent of the law. Unless otherwise stated the results shown in this test report refer only to the sample(s) tested and such sample(s) are retained for 30 days only.  
Attention: To check the authenticity of testing / inspection report & certificate, please contact us at telephone: (86-755) 8307 1443, or email: [CN.Doccheck@sgs.com](mailto:CN.Doccheck@sgs.com)

SGS-CSTC Standards Technical Services (Shanghai) Co., Ltd.	3 <sup>rd</sup> Building, No. 889, Yishan Road, Xuhui District Shanghai, China 200233	t (86-21) 61402666	f (86-21) 64958763	<a href="http://www.sgsgroup.com.cn">www.sgsgroup.com.cn</a>
Testing Center for Textiles	中国·上海·徐汇区宜山路889号3号楼 邮编: 200233	t (86-21) 61402666	f (86-21) 64958763	e <a href="mailto:sgs.china@sgs.com">sgs.china@sgs.com</a>